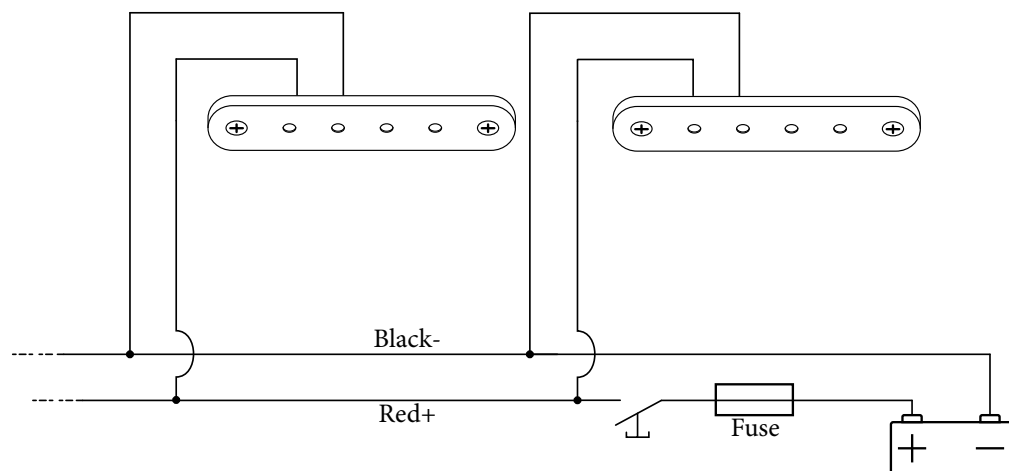
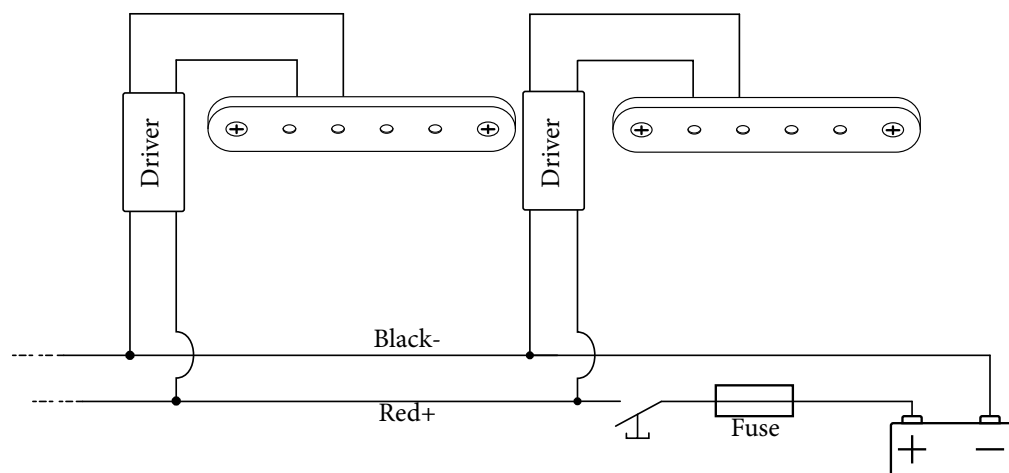


# Electrical diagram

## For 12v



## For 24v



[www.casolux.com](http://www.casolux.com)

# CASOLUX®

*The lights of tomorrow*

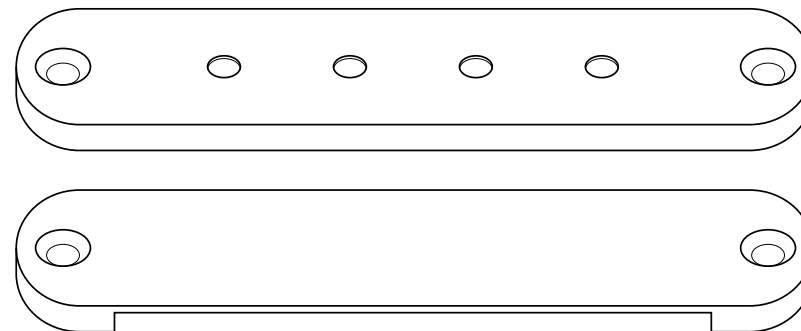
February 2024  
Manual A

## MERLE

Courtesy Light

### Assembly instruction

Item	Power	Input
MERLE-FRONT-3000K	0,5w	10-18V DC / 10-30V DC
MERLE-FRONT-RED	0,5w	10-18V DC / 10-30V DC
MERLE-FRONT-BLUE	0,5w	10-18V DC / 10-30V DC
MERLE-DOWN-3000K	0,5w	10-18V DC / 10-30V DC
MERLE-DOWN-RED	0,5w	10-18V DC / 10-30V DC
MERLE-DOWN-BLUE	0,5w	10-18V DC / 10-30V DC



Casolux Aps  
Borrevej 18, 6400 Sønderborg  
Phone: +45 7445 0005  
[www.casolux.com](http://www.casolux.com)

## BEFORE YOU START

### Safety information

Read all safety information before using the device to ensure safe and proper use.

The light source of this light fixture is not replaceable, when the light source reaches its end of life the whole unit shall be replaced.

It is extremely important that these instructions are read carefully, and any illustrations studied before commencing installation.

Please keep these instructions for future reference.

### WARNING!

- Electricity can be dangerous.
- Do not attempt to fit installation unless you are competent.
- If in any doubt consult a qualified electrician to complete electrical installation.
- Installation to comply with current IET wiring regulations.
- If you find any damage to the electrical parts, please ask a qualified electrician.
- Be aware of electrical voltage on the different models to avoid damage.

### Correct disposal



This marking indicates that this item should be disposed of separately from household waste. The item should be handed in for recycling in accordance with local environmental regulations for waste disposal.

### Cleaning Instructions and Care

- Please disconnect the light before cleaning.
- Take extra care when cleaning and assembling.
- Do not use any chemical or abrasive solutions.

### Installation

- Take care when handling and installing to avoid damage to the product.
- Avoid mounting the fitting on a damp surface such as newly painted or plastered area as this could cause discoloration of the finish.

## General Assembly

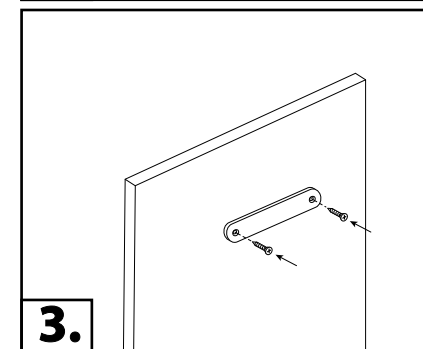
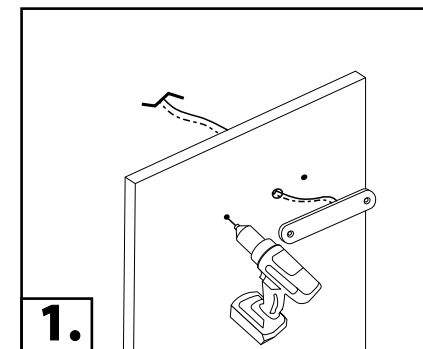
### For 12v: (mount only light)

1. Drill 2 holes for screws and 1 bigger for routing the cables through.

2. Route the cables from the light through the hole.

Then connect the light according to the electrical diagram.

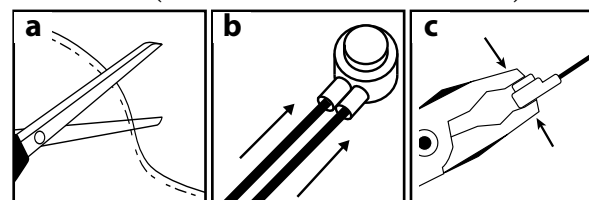
3. Screw in the light with the included screws to finish installation.



### For 24v: (Add dc/dc 10-30vdc driver)

1. Drill 2 holes for screws and 1 bigger for routing the cables through.

2. Route the cables from the light through the hole. Connect cable from converter and cable from lamp using the included 3m waterproof connector. (See instruction a-b-c below)



Then connect the light according to the electrical diagram.

3. Screw in the light with the included screws to finish installation.

