

# Casolux General light

General light system

HANNE

GB

IP65



Power  
6 - 18 w

Efficiency  
44-50 Lm/w

Lifetime  
**50.000 Hours**  
(70% Lumen maintenance)

Input  
220-240 VAC

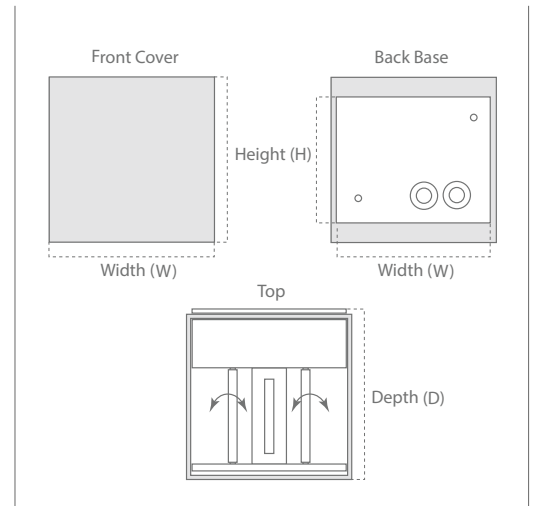
Material  
Aluminum



Black cover with black base



White cover with white base



Lamp base with 4 individual shields which can adjust light beam both in top and bottom

mm	Cover		Base		
	H	W	H	W	D
Hanne Small	90	100	70	90	105
Hanne Medium	120	120	90	110	125
Hanne Large	150	150	100	130	155

Product code	Lumen output	Beam	Power	CCT	CRI
HANNE-SMALL-BLACK	260 lm	2 x 0-100°	6 w	3000K	> 80
HANNE-SMALL-WHITE	260 lm	2 x 0-100°	6 w	3000K	> 80
HANNE-MEDIUM-BLACK	570 lm	2 x 0-100°	12 w	3000K	> 80
HANNE-MEDIUM-WHITE	570 lm	2 x 0-100°	12 w	3000K	> 80
HANNE-LARGE-BLACK	900 lm	2 x 0-100°	18 w	3000K	> 80
HANNE-LARGE-WHITE	900 lm	2 x 0-100°	18 w	3000K	> 80

## Feature

- Module wall lamp made up of a lamp base and replaceable fronts
- The lamp base has 4 shields that independently of each other adjust the light beam in the top and bottom
- IP65 design with integral thermal management for long life
- Hard anodized aluminum ensures corrosion free product in damp environment

## Material

- Hard Anodized aluminum 50 µm

## Benefit

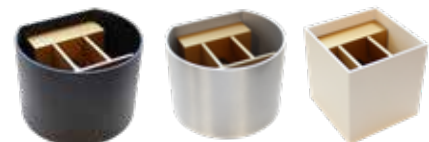
- High reliability
- Maintenance free

## Customized solution

- Gold anodized aluminum base for maximum light reflection
- Cover can be made in round shape and other colours

## Application

- General lighting

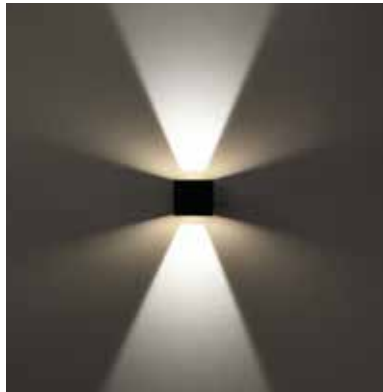


# Casolux General light

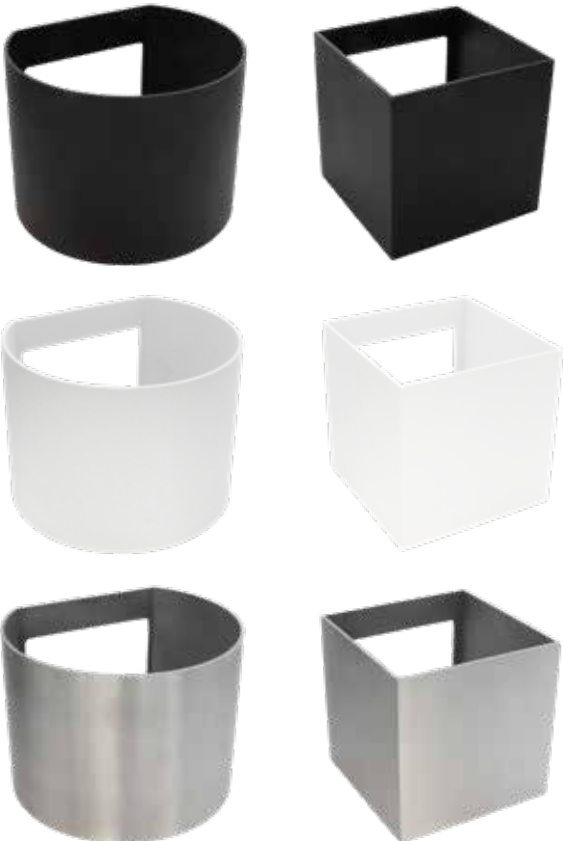
General light system

HANNE

GB



Replaceable fronts



Lamp base with 4 individual shields which can adjust light beam both in top and bottom

