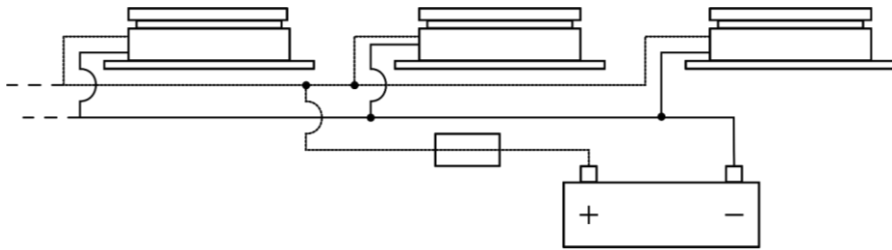


CASOLUX®

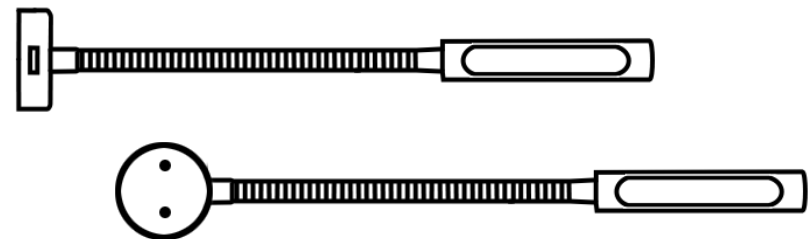
The lights of tomorrow



Table/Wall Light

Assembly Instructions

ITEM	POWER	VOLT
MALENE-TO-TABLE-10-29V	WW 2W/RED 0,5W	10-29V DC
MALENE-TO-BL-TABLE-10-29V	WW 2W/RED 0,5W	10-29V DC
MALENE-TOUCH-USB-REWW-12	WW 2W/RED 0,5W	10-18V DC
MALENE-TOUCH-USB-REWW-24	WW 2W/RED 0,5W	20-29V DC
MALENE-TO-WALL-10-29V	WW 2W/RED 0,5W	10-29V DC
MALENE-TO-BL-WALL-10-29V	WW 2W/RED 0,5W	10-29V DC
MALENE-TOUCH-USB-WALL-12	WW 2W/RED 0,5W	10-18V DC
MALENE-TOUCH-USB-WALL-24	WW 2W/RED 0,5W	20-29V DC



BEFORE YOU START

Safety information

Read all safety information before using the device to ensure safe and proper use.

The light source of this light fixture is not replaceable, when the light source reaches its end of life the whole unit shall be replaced.

It is extremely important that these instructions are read carefully, and any illustrations studied before commencing installation.

Please keep these instructions for future reference.

WARNING!

- Electricity can be dangerous.
- Do not attempt to fit installation unless you are competent.
- If in any doubt consult a qualified electrician to complete electrical installation.
- Installation to comply with current IET wiring regulations.
- If you find any damage to the electrical parts, please ask a qualified electrician
- Be aware of electrical voltage on the different models to avoid damage

Correct disposal



This marking indicates that this item should be disposed of separately from household waste. The item should be handed in for recycling in accordance with local environmental regulations for waste disposal.

Installation

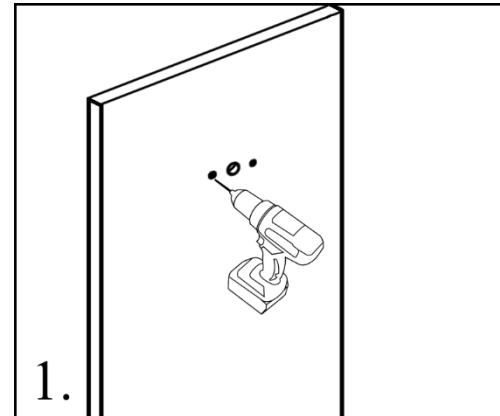
- Take care when handling and installing to avoid damage to the product.
- Avoid mounting the fitting on a damp surface such as newly painted or plastered area as this could cause discoloration of the finish.

Cleaning Instructions and Care

- Please disconnect the light before cleaning.
- Take extra care when cleaning and assembling.
- Do not use any chemical or abrasive solutions.

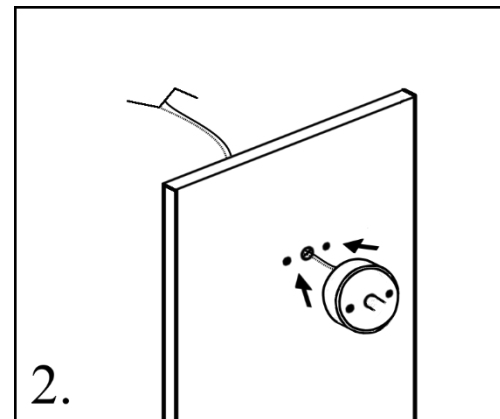
General Assembly

1. Drill 2 holes for the screws and 1 bigger for routing the cables through.



2. Route the cables from the light through the hole

Then connect cables according to the electrical diagram.



3. Screw in the light

